

POSÁZAVÍ



English



www.posazavi.com



Czech Republic

CONTENTS

Konopiště chateau	2 – 3
Benešov – Atlas Hotel, Benica Hotel	4
Guesthouse Pension Konopiště	5
Sports Centre Benešov	6
Town Of Benešov	7
Brewery Benešov	8
Military technical museum in Lešany	9
Netvořice	10
Jílové u Prahy	11
Posázavský Pacifik	12 – 13
Neveklov	14
Jablonná nad Vltavou Chateau	15
Heroutice farm	16 – 17
Týnec nad Sázavou	18
Natural trails	19
Brejov mill	20
Community centre Týnec	21
Boating Centre	22 – 23
The Traditional Region Posázaví	24 – 25
Všetice Hotel	26
Barochov Resort	27
Český Šternberk Castle	28 – 29
Guesthouse Čtyřlístek	30
Sázava	31
Complex Sázavský ostrov	32
Sporthotel Kácov	33
Divišov	34
Ostředek, Drahňovice	35
Chateau Jemniště	36 – 37
Vlašim	38 – 39
Chateau and Park in Vlašim	40 – 41
Legendary Blaník Mountain	42 – 43
Votice	44
Džbány-Žebrák Natural Park	45
Nesvačily, Votice	46
Chateau Vrchotovy Janovice	47

HISTORY AND NATURE THE POSÁZAVÍ

The variety of services in the Posázaví Region is considerably wide, and in fact everyone will find what they are looking for in this area.

You will discover this after you have read this comprehensive brochure of the Posázaví Region. And if you do not find your inspiration in the book, please visit the web pages www.posazavi.com, which list an events calendar, updated daily, where you will surely find something to your liking.

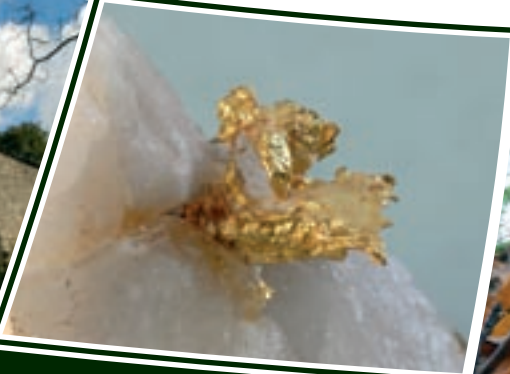
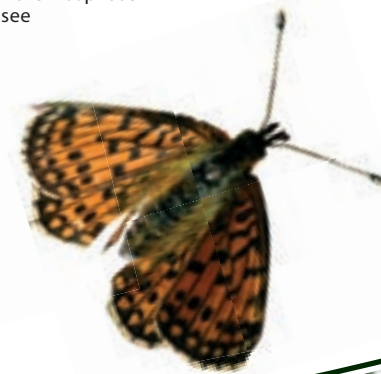
The natural splendours are the primary object of this year's promotion. Photography mapping of the most interesting places of the Region is currently ongoing, of places such as the Sázava River, the Blaník Protected Landscape Area, the Medník area and the ore mines. Moreover, we have moving images available in the form of short motivational spots. You can view these in the E-television section on the www.posazavi.com web pages.

All of the final outcomes of this project, co-financed by the Regional Operation Program of the Region Solidarity of the Central Bohemia, will be presented at an exhibition of photo posters by the photographer and film director Jaroslav Pelíšek.

The exhibition will start on the **11th of June 2010 and will be open from 8 a.m. to 4 p.m.** daily in the building of the Piarist Dormitory at Masarykovo Square 1 in Benešov. Also presented will be the posters from the first phase of the project – History in Pictures. Thus, you can see a total of 100 large-scale pictures depicting the Posázaví Region.

Posázaví o.p.s.

Masarykovo náměstí 1, 256 01 Benešov
tel./fax: +420 317 701 948
e-mail: info@posazavi.com
<http://www.posazavi.com>



KONOPIŠTĚ CHATEAU

The castle of Konopiště was founded at the end of the 13th century, probably by the bishop Tobias of Benešov. It was built as a Gothic fortress copying the design of French castles. First building alterations were ordered by George of Šternberk at the end of the 15th century, and later by Hodějovští of Hodějov in the 17th century. In the 18th century, Vrtbové of Vrtba converted the castle into a Baroque palace. Franz Ferdinand d'Este, who bought it in 1887, had it rebuilt into a grand emperor's residence.

The interior of the chateau boasts precious collections; among the most valuable is the so-called "Estenská" Weapons Collection, inherited by Archduke Franz Ferdinand d'Este from his Italian predecessors, and the St. George Collection brought together from scratch by Franz Ferdinand himself. Within a quarter of a century, he managed to collect a deposit of wood carvings, paintings and various artefacts of the art handicraft, which are related to the St. George's cult and date from the 15th century until the beginning of the 20th century. Competing with Franz Ferdinand in the collecting of antiquities related to St. George was the British King Edward VII, who was also an erudite collector of paintings and sculptures of the brave dragon-slayer.

You can see:

- Salons of the South Wing with hunting trophies corridor
- Salons of the North Wing with an armoury and a chapel
- Private rooms of Archduke Franz Ferdinand d'Este and his family
- Unique collection of St. George awarded with the Europa Nostra Award
- Shooting range of Archduke Franz Ferdinand d'Este
- Exhibition 'From Sarajevo to the Great War'
- Greenhouses in the Rose Garden



Reservation visits:
tel.: +420 274 008 154 – 6
e-mail: rezervace@stc.npu.cz
on-line: <http://www.zamek-konopiste.cz>

Zámek Konopiště
Konopiště 1, 256 01 Benešov
tel.: +420 317 721 366, +420 602 349 068
e-mail: konopiste@stc.npu.cz
<http://www.zamek-konopiste.cz>
<http://www.stc.npu.cz>

Opening hours:

April, October:	Tue – Fri Sat, Sun	9 a.m. – 12 noon and 1 p.m. – 3 p.m. 9 a.m. – 12 noon and 1 p.m. – 4 p.m.
May – August:	Tue – Fri	9 a.m. – 12 noon and 1 p.m. – 5 p.m.
September:	Tue – Fri Sat, Sun, Hol	9 a.m. – 12 noon and 1 p.m. – 4 p.m. 9 a.m. – 12 noon and 1 p.m. – 5 p.m.
November:	Tue – Fri	9 a.m. – 12 noon and 1 p.m. – 3 p.m. only groups on prebooking
	Sat, Sun	9 a.m. – 12 noon and 1 p.m. – 3 p.m. also the general public
January – March, December:		closed

The instructive path "History and Nature of the Konopiště Chateau" provides elementary information about the development and current state of the park, as well as about its most significant places of interest. The whole area of the park (340 ha) can be explored on foot or on bike along two tracks marked with 12 informative boards. The circuits are also to the larger extent accessible for physically handicapped people on wheelchairs. The shorter track is focused on the closest surroundings of the chateau designed in the style of Italian Baroque and is approximately 2 km long. The longer track leads the visitors through more distant landscaping parts of the park and is about 7 km long. An important feature of the park is the Konopiště Pond with the area of 20,6 ha and a Rosary with glass houses founded in 1898 by the Viennese gardener Karl Mössner.

The Konopiště Chateau caters for wedding ceremonies, both civilian and religious ones.

There are refreshment facilities available including the d'Este **Café, cafeteria, Zamecká Restaurant, located in the newly reconstructed former kitchens** of Franz Ferdinand d'Este in the courtyard of the chateau, and the Růžová (Rose) Cafe in the Rose Garden.

You can take a historical train or a historical cabriolet to enjoy your journey from the car park to the so-called Chapels outside the chateau.

BENEŠOV, KONOPIŠTĚ



ATLAS HOTEL

lies in the 'heart of Benešov' and offers 19 double rooms, 7 triple rooms and 1 room with disabled access. All rooms are en suite and have satellite TV, phone and WiFi internet access. The hotel also offers conference facilities; there is a salon for a maximum of 45 people and a hotel club with a capacity of up to 60 people. There is also a bowling bar (two lines, pool table and table football) in the hotel.

The hotel restaurant offers specialities of Czech and international cuisine and has a capacity of 60 people in both smoking and non-smoking areas. There is also a summer terrace with seating for 20. The hotel has its own enclosed car park.

Hotel Atlas

Tyršova 2063, 256 01 Benešov
tel.: +420 317 724 771, fax: +420 317 724 761
e-mail: hotelatlas@quo.eu
http://www.hotel-atlas.cz

Bowling bar

Tyršova 182, 256 01 Benešov
tel.: +420 736 610 374

BENICA HOTEL

is situated at the edge of Benešov in the direction of Tábor, in close proximity to the Konopiště Chateau. The hotel has 33 en suite rooms equipped with telephone and satellite TV. Its renowned restaurant with a pizza parlour caters for up to 80 people. On fine days you can enjoy sitting on the outdoor terrace and also use the garden with a swimming pool. There is free WiFi Internet access throughout the entire hotel.

Moreover, we always keep our little ones in mind at Benica Hotel. Child seats, changing counters, child cots and an outdoor playground are indeed available. The premises of the hotel are suitable for various events, such as seminars, trainings, presentations, festive rafts, receptions, wedding and graduation celebrations, and garden parties. The congress hall has a capacity of up to 120 people.

Hotel Benica***

Ke Stadionu 2045, 256 01 Benešov
tel.: +420 317 725 614, +420 737 797 212
e-mail: marketing@benica.cz, http://www.benica.cz



GUESTHOUSE PENSION KONOPIŠTĚ****

Romance, family relaxation or a short stay for businessmen in the heart of the Czech Republic only a 20-minute drive from Prague, amidst lovely countryside, just a few steps of the most beautiful chateau in Central Bohemia, Konopiště – all of that and more offers the new guesthouse Pension Konopiště****

The guesthouse is located in the building of the museum of motorcycles and provides original conjunction of the historical character of the location (in close vicinity of the chateau of Konopiště) and the largest Czech museum of motorcycles. The breakfast is served right in the glassed room amongst the exhibited motorcycles.

Each of the six apartments of the guesthouse has its own character, color and spirit. All of them are equipped with the computer with internet link, satellite broadcasting TV set, telephone, minibar and safe-deposit. Two of the apartments have discrete private entrances, further two are designed as honeymoon suites with quality water king size beds, and three are equipped with kitchenette.

New married couples (up to 2 years from their marriage) and married couples staying in the guesthouse in the month of their wedding anniversary are granted 15% reduction in price of their accommodation. Upon request, the guesthouse provides turnkey wedding solutions, or other services in the wedding organization at the chateaux of Jemniště and Konopiště (including open-air wedding party).

Pension Konopiště****

Konopiště 30, 256 01 Benešov
tel.: +420 737 230 297
+420 317 702 658
e-mail: info@pension-konopiste.cz
http://www.konopiste.eu





SPORTS CENTRE BENEŠOV

Sports Centre Benešov is a sports and relaxation centre with the widest range of sports activities in the region. In the peaceful surroundings at the suburbs of the town of Benešov the visitors have the opportunity to attend to active leisure activities, to indulge in relaxation and to have fun. The hotel part of the premises offers 21 double rooms, 3 quadruple rooms and 1 five-bed room. All the rooms are fitted with private toilet, shower, TV, telephone and internet connection. In the Tennis Hall you can play badminton, volleyball or football-tennis. The air-inflated hall covers artificial football lawn of the fourth generation. Aerobic, spinning and cardio fitness gyms are equipped with quality air-conditioning and sound system. Six-lane bowling Brunswick or Grosso restaurant with delicious cuisine offering home-made pasta and spacious terrace are the right places to organize business events or parties with your friends.

Sport

The sports facilities include 4 tennis courts (of that 2 covered), 4 badminton courts, 1 volleyball court, 1 football-tennis court, 1 beach-volleyball court, 1 mini-football playground (4th generation of artificial lawn), cardio-fitness room, spinning hall, aerobics, gym with elastic surface, 6-lane Brunswick bowling. All the sports facilities are equipped with modern surfaces and air-conditioned.

Conferences

The small hall – the capacity of 20 – 30 persons (for schools, theatre)
The big hall – the capacity of 60 – 90 persons (for schools, theatre)
There is a quality sound distribution in the halls, they are equipped with projection and teaching aids.

Wellness

The wellness facilities include massages, Finn sauna, whirlpool, steam sauna, restaurant, sport-bar and bowling-bar.

KONTAKTS – REZERVATIONS

tel.: reservations – hotel +420 317 750 001
tel.: reservations – bowling +420 317 750 003
tel.: reservations – sports +420 317 750 004
tel.: reservations – restaurant +420 317 750 005

S-CENTRUM

U Vodárny 2215, 256 01 Benešov
e-mail: info@scentrum.eu
objednavky@scentrum.eu
<http://www.scentrum.eu>



THE TOWN OF BENEŠOV

offers to its visitors a wide range of activities. Indoor swimming pool, outdoor swimming bath, ice skating stadium and number of tennis courts as well as other facilities are here for those who enjoy sports. The Spring of Josef Suk Music Festival regularly offers a rich culture experience to visitors of Benešov, as well as several amateur theatres and music bands and regular professional culture programmes held in the Town Theatre, called Na Poště. Visitors traditionally come to seek culture in Benešov heading for the Natural Theatre in Konopiště, which organises cultural events such as the Konopiště Opera, Radio Blaník's Birthday, Folk Flower Festival and many others.

The amateurs of history may visit remains of the Karlov Minorits' Church, Piarist College with the Church of St. Anna or the Old and New Jewish Cemetery with the memorial of holocaust victims. Benešov Museum of Art and Design t offers its expositions to the lovers of modern art.

The amateurs of history may visit remains of the Karlov Minorits' Church, Piarist College with the Church of St. Anna or the Old and New Jewish Cemetery with the memorial of holocaust victims. Benešov Museum of Art and Design t offers its expositions to the lovers of modern art.

The Museum of Art and Design t offers the following expositions:

Contemporary Czech Painting • Contemporary Czech Plastic Art • Czech and Slovak Photography of the 19th and 20th Centuries • Drawing and Graphic Art of the Personalities of the Czech • Art in the 20th Century • Czech Graphic Design of the 20th Century • Global Visual Grammar • Laboratory of Colors and Shapes

The Museum of the Region Podblanicko shows the following displays:

History of the Town of Benesov • Benesov – Garrison • Town 1882 – 2002 • Artists of the Benesov Region in the 20th Century • Folklore of the Benesov Region

Město Benešov

Masarykovo náměstí 100, 256 01 Benešov
tel.: +420 317 754 111
e-mail: mu-bene@benesov-city.cz
<http://www.benesov-city.cz>

Muzeum umění a designu Benešov

Malé náměstí 74/1, 256 01 Benešov
tel.: +420 317 729 113
e-mail: recepce@muzeum-umeni-benesov.cz
<http://www.muzeum-umeni-benesov.cz>

Pobočka Muzea Podblanicka

Malé náměstí 74/1, 256 01 Benešov
tel.: +420 317 723 419
e-mail: muzeum-podblanicka@quick.cz
<http://www.muzeumpodblanicka.cz>

Městské kulturní středisko

Tyršova 163, 256 01 Benešov
tel.: +420 317 722 114
e-mail: mks.bn@seznam.cz

BREWERY BENEŠOV



The Ferdinand Brewery in Benešov was founded by Archduke Franz Ferdinand d'Este in 1897. Throughout its existence it has used the traditional technology of bottom fermentation in open fermenting cellars and ripening in lager cellars.

The beer production is based on the original beer brewing recipes that uses only Czech malt and the best hops from the Žatec area. The brewery produces a typically Czech beer and the slogan 'true beer' in its name is more than just a statement. It is a statement and an obligation that all employees truly strive to fulfil. Ferdinand beer is typical for its golden colour, sparking pureness, strong relish, full-bodied taste and high, thick, frothy head.

The production line of the brewery offers five types of beer, ranging from non-alcoholic beer to a special kind. Its business policy is aimed mainly at the domestic region and export markets. However, as the employees keep receiving requests for a new type of beer, they are currently preparing a novelty from the Ferdinand beer family; a strong 15 % beer.

The brewery will be happy if you remain their customer and appreciate the taste of their true beer.



Pivovar Ferdinand a.s.
Táborská 306, 256 01 Benešov
tel.: +420 317 722 511
e-mail: ferdinand@pivovarferdinand.cz
<http://www.pivovarferdinand.cz>

For excursions to the brewery, call +420 317 749 230 and speak with Mr. Kovařík. Maximum 30 people per group, entry fee 120 CZK, including the beer tasting.

MILITARY TECHNICAL MUSEUM IN LEŠANY



Since 1996 the premises of the former artillery quarter between Krhanice and Lešany u Týnce nad Sázavou have hosted the exhibition of the Military Technical Museum of the Prague Military History Institute. The collections currently contain more than 450 historic tanks, cannons, motorcycles, armoured military trucks and cars dating from 1890 up to the present, which can be seen in seven halls, under six shelters as well as in the open air. New expositions of the rocket and railway armed forces were opened in 2009.

The museum exhibits are placed in ten halls and under six sheds outside. One of the most interesting expositions of the museum is the 'Ostrava Operation – the Tank Battle'. Visitors can see a realistic portrait of the fights that went on during the liberation of Ostrava during March and April 1945.

The contents and extent of the collection are unique, and they count among the most important European expositions of their type.

Opening hours:
July, August Tue – Sun 9.30 a.m. – 5.30 p.m.
June, September Sat – Sun 9.30 a.m. – 5.30 p.m.

Vojenské technické muzeum Lešany
257 42 Krhanice
tel.: +420 973 226 911
e-mail: museum@army.cz, <http://www.vhu.cz>

The museum organises events with the presentation of the historical technology on move in the new LEŠANY ARENA. The events are held annually at the opening and during the summer season.

22nd May 2010 Armoured Day – opening of the season in the Army Technology Museum in Lešany
28th August 2010 Tank Day in Lešany



NETVOŘICE



FAMILY MUSEUM OF ENAMEL

Various enamel ware accompanies people in their lives since the mid 19th century. In our museum, you can find the daily-used objects as well as curiosities. The collection features samples of the majority of the Austrian-Hungarian and later Czechoslovak enamel factories. We are open when we are at home. Call us to check up whether we are at home.

THE "CAT BEHIND THE CHIMNEY" BED AND BREAKFAST FOR WANDERERS AND BIKERS

Modest and cheap lodging in your sleeping-bag or in "our duvets". Independent toilet and bathroom with shower. You can make coffee or tea in the living room and relax. In the evening, you can sit around the open fire and have a home-made breakfast in the morning.

Rodinné muzejíčko smaltu, Pražská 13, 257 44 Netvořice
tel.: + 420 777 689 688, e-mail: trnka.hracky@seznam.cz
tel.: + 420 776 151 343, e-mail: jindrasmidova@centrum.cz
<http://www.detskahrste.cz>

MUNICIPAL MUSEUM IN NETVOŘICE

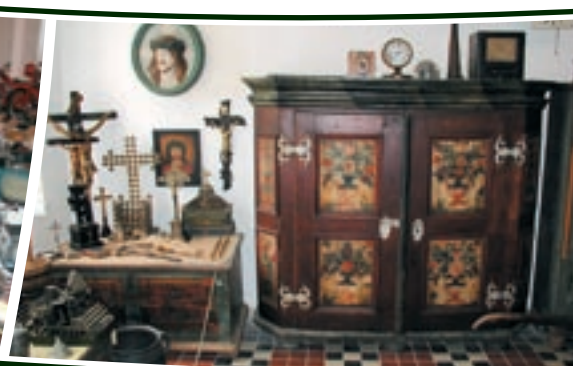
The museum in Netvořice was established as a municipal museum in 1919 with the support of the municipal authority and the Club of Natives of Netvořice and the surrounding areas. It houses a remarkable collection of Týnec earthenware and a collection of objects of applied arts and the folk culture – coins, medals, plaques and badges.

Městské muzeum Netvořice, 257 44 Netvořice 46
tel.: +420 317 789 814, e-mail: info@netvorice.cz

MOTORCYCLE AND TECHNICAL MUSEUM NETVOŘICE

The museum in Netvořice was established as a municipal museum in 1919 with the support of the municipal authority and the Club of Natives of Netvořice and the surrounding areas. It houses a remarkable collection of Týnec earthenware and a collection of objects of applied arts and the folk culture – coins, medals, plaques and badges.

Motocyklové a technické muzeum Netvořice
Zahradní 64, 257 44 Netvořice
tel.: +420 737 230 297
e-mail: muzeum@konopiste.eu
<http://www.konopiste.eu>



THE ROYAL GOLD-MINING TOWN JÍLOVÉ U PRAHY

The town of Jílové u Prahy was founded as a mining settlement in the 1st half of the 13th century. There are three the oldest listed buildings at the historical square in Jílové: the church of St. Vojtěch from the 13th century, the reconstructed town-hall with a preserved "municipal round-house" and the house "Mince" where the Regional museum is located today.

Opening hours of museum:

The Museum is open daily, except for Mondays (if Monday is not a bank holiday).

January – May 9 a.m. – 12 noon 1 p.m. – 4 p.m.

September – December 9 a.m. – 12 noon 1 p.m. – 4 p.m.

June – August 9 a.m. – 5 p.m.

The drift of St. Joseph in Dolní Studené is one of the many mine works of the significant part of the Jílové gold-bearing area – Koucourský vein system. The drift is mapped on one of the oldest preserved maps of the Jílové district from 1730.

The drift of St. Anthony of Padua is distanced from the drift of St. Josef about 100 m. It is an old mine work where the last work was being performed in the first half of the 18th century.

St. Joseph Galler, St. Anthony of Padua opening hours:

April – October: Sat, Sun, holidays 10 a.m. – 5 p.m.

July – August: also Tue – Fri 1 p.m. – 5 p.m.

November – March: upon reservation for groups

The drift Halíř is driven in a modern way, representing the youngest stage of the gold mining in the Jílové area since it was established as a control drift in the half of the 20th century. The main corridor, being long 270 m crosses the old stopes. A mine equipment mini-exposition is located here.

The opening hours of the Halíř drift:

April – October: Sa, Sun, holidays 10 a.m. – 5 p.m.

Regionální muzeum Jílové u Prahy

Masarykovo náměstí 16, 254 01 Jílové u Prahy
tel.: +420 241 950 791, fax: +420 241 950 877
e-mail: info@muzeumjilove.cz
<http://www.muzeumjilove.cz>



JÍLOVÉ U PRAHY





This romantic railway still leads through the beautiful countryside along the Sázava River, thus enabling the visitors of the region to wander from a historical monument to the museum, from a village to the town, from a campsite to the guest house and back home. Thanks to the group of enthusiasts, it is possible to enjoy a trip on the historical train with a steam engine or on a historical motor train, very popular for school excursions.

Regular Czech Railway steam trains always take their passengers to interesting culture events. Also available is Posázavský Pacifik, a historical diesel train, for company events; it can be used for seminars or company presentations.

České dráhy, a.s.

Informace o parních jízdách

tel.: +420 972 228 101, +420 972 241 629

e-mail: pavlik@zst.cd.cz, leمبرk@kcd.cd.cz

<http://parnijizdy.ic.cz>

The quest for golden treasure by Posázavský Pacifik

29th May

Praha-Braník – Vrané nad Vltavou – Čerčany – Benešov – Postupice (Jemniště Chateau) and back. The train will be pulled by a steam engine and consist of a collection of contemporary carriages.

The Battle for Ford near Zbořený Kostelec

26th June

Praha-Braník – Týnec nad Sázavou – Čerčany – Benešov – Postupice (Jemniště Chateau)

Sázava Saint's Day Fair

3rd July

Praha-Braník – Vrané nad Vltavou – Čerčany – Kácov / Kácov – Čerčany – Praha-Strašnice – Praha-Vršovice

Kácov Saint's Day Fair

21st August

Praha-Braník – Vrané nad Vltavou – Čerčany – Kácov and back via Říčany, the train will be pulled by a steam engine and consists of a collection of contemporary carriages.

Tank Day in Lešany

28th August

Praha-Braník – Vrané nad Vltavou – Čerčany – Benešov – Postupice and back

TOURIST TRAIN 'POSÁZAVSKÝ PACIFIK'

3rd July

A historical diesel train to the Sázava Fair. Train's route: Kolín – Leděčko – Sázava and back.

4th July

A historical diesel train to the Sázava Fair. Train's route: Praha-Smíchov – Praha-Hostivař – Čerčany – Český Šternberk – Kácov and back.

4th July

A historical diesel train to the Sázava Fair. Train's route: Kolín – Leděčko – Sázava and back.

21st August

A historical diesel train to the Kácov Fair. Train's route: Praha Smíchov – Čerčany – Sázava – Český Šternberk – Kácov. A special diesel carriage from Kolín will be connected to the train in Leděčko.

23rd October

A journey through the history of Šternberk. Train's route: Praha-Smíchov – Praha-Hostivař – Čerčany – Český Šternberk – Kácov and back.

Posázavský Pacifik, o. s.

Havlíčková 445, 257 22 Čerčany

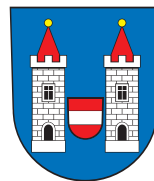
tel.: +420 317 776 518

e-mail: posazavsky.pacifik@seznam.cz

<http://www.posazavsky-pacifik.cz>



NEVEKLOV



NEVEKLOV TOWN

This part of the Benešov Pahorkatina Hill-Country wedged between the Vltava and Sázava rivers boasts a picturesque landscape, clean environment, the nearby Slapská Dam and good transport connections.

Tourists Highlights

- Church of St. Havel, originally a gothic building rebuilt in the Baroque style in the second half of the 17th century
- Church of the Hussite Religion, a one-nave building with a tower dating from 1934
- Wayside Cross and Plague Monument dating from 1773
- Jewish cemetery and old synagogue founded in 1657
- Monument to the forced eviction of citizens of Neveklov during World War II
- Chvojínek – Church of St. Wenceslaus, early gothic building dating from the end of the 13th century
- Neštětická Mountain – a cruel repression of peasant rebellion in 1627 by Michna of Vacínov; an 11-metre-high lookout tower was erected in this place to commemorate the 300-year anniversary of this rebellion.

The Slapská Dam lies a mere 11 kilometres from Neveklov. It was constructed between 1949 and 1954 and occupies an area of almost 14 km²; it is 42 km long and 70 m deep with a maximum width of 700 m.



Tourists can take a boat during the season from one tourist destination to another on the route Slapy – Nová Žihovošť or Slapy – Solenice and back. A visit to the Slapská Dam offers excellent opportunities for camping, ball games and water sports, as well as nightlife.

Informační centrum Neveklvsko

nám. Jana Heřmana 83, 257 56 Neveklov
tel.: +420 317 741 207
e-mail: info.neveklov@seznam.cz
<http://www.region-neveklovsko.wz.cz>
<http://www.neveklov.cz>

JABLONNÁ NAD VLTAVOU CHATEAU



JABLONNÁ NAD VLTAVOU CHATEAU

It was built on the site of an older water stronghold from the 14th century. The research of the building and uncovered paintings proved that the stronghold was transformed into a Baroque chateau in the 18th century. Jan Josef Kinský and countess Marie Anna Harbuval-Chamaré were

amongst the significant owners of the chateau. The chateau received a Neo-Classicism facelift during renovations in the second half of the 19th century. The cast-iron pillars, wrought railings and sculptures in the adjacent park also date from this last complex reconstruction. The figural sculpture called Harpist, Hunter, Flora, Autumn and Winter are the work of the German sculptor Möldner. Jablonná nad Vltavou, a chateau listed in the Cultural Heritage of the Czech Republic, is a typical example of a minor aristocracy seat or a summer residence. A company called ROYAL Interior bought the chateau in 2005; it carried out a complex reconstruction and installed its expositions into the premises. The most emphasis was applied to maintaining the original character of the building and adjacent park with sculptures during the reconstruction.

Opening hours:

April - September:
October - March:

Tue - Fri
Tue - Fri

10 a.m. - 5 p.m.
per order only

Zámek Jablonná nad Vltavou

Zámek 1, 257 44 Jablonná nad Vltavou
tel.: +420 272 680 062
e-mail: info@zamekjablonna.cz
<http://www.zamekjablonna.cz>

Reservation visits:

tel.: +420 272 680 062
e-mail: info@zamekjablonna.cz

The building of the chateau is part of a Baroque complex consisting of the chateau, farm houses and an English-style landscaped park, which boasts the tallest western cedar (Thuja plicata) in the Czech Republic.



HEROUTICE FARM



Private riding school in beautiful natural surroundings offers all-year round week-long or weekend relaxation stays with horse riding training. Advanced riders may enjoy one- or two-day horseback tours of the Sázava riverside.

The farm focuses on children, offering them year-round training camps with horseback riding theory and practice, practical experience with tending horses along with language lessons and a complete program, including meals 5 times daily.

The complex accommodates 42 persons in rooms for two or four, has a stylish restaurant for 80 persons that can be used for weddings or seminars, a summer terrace and basic shopping possibility directly at the farm.

The pride of the farm is an indoor riding hall with a tribune for spectators; it fulfils the racing parameters. Regular races, trainings and exams are organised in the hall; it is constantly used for training, even in the evening or if the weather is bad (an ideal surface for horse-riding).

Furthermore, the farm has an outdoor complex for show jumping at an international level.

Farma Heroutice

Miloslav a Jana Perníčkovi
Heroutice 11, 257 56 Neveklov
tel.: +420 317 741 392
+420 604 232 834
fax: +420 317 741 399
e-mail: heroutice@heroutice.cz
<http://www.heroutice.cz>



A BRIEF INVITATION TO THE MOST IMPORTANT EVENTS IN 2010

22nd – 23rd May

Ankara Award – traditional show jumping races for ponies and horses; you will see the first round of this year's 'World Youth Completion' SIEC

12th – 13th June

Dressage Races – including the Criterion of Young Horses Competition (a horse breeding competition)

20th June

Dressage Races – Dressage Championship of the Central Bohemian area

3rd – 4th July

International Horse Races CSN Heroutice 2010

A qualification round of the Pony League 2010 will be held at the races. Qualification competition of individual categories will be held on Saturday and the races will be concluded on Sunday.

27th – 28th November

PONY LEAGUE 2010 Finals

As every year, Heroutice organises a hall finals of the 8th Year of the Pony League competition on the last Sunday in November. There are three categories in the competition: the Pony League for young children up to the age of 12 on ponies, the Open Pony Extra-League for all riders up to the age of 15 on ponies without limitation, and the Teenager Category for riders up to the age of 21 on large horses.

Specilising in children

- Pony and horse riding courses for children; from the basic level up to the advance level
- Consistent good results of the trainees at the local and national championships in all riding disciplines



TÝNEC NAD SÁZAVOU



Týnec nad Sázavou has a very long history. Its name itself indicates that at the place where the Týnec Castle is located these days – on a high cliff above the river – there was a fortified settlement in the ancient times, the so-called Týnec. There is a probable connection between the settlement and an old trade route leading from southern Bohemia through the town of Sázava and along the Kostelec Castle to Prague. Adjacent to a stone rotunda, a religious building, was a secular residential structure, uncovered during a research in 1969. It was just a stilted structure and dated back to the 11th century. A stone Romanesque palace was built on its place at the turn of the 13th century, with a prism defence tower next to the rotunda constructed later on. The palace currently houses the Municipal Museum with an exhibition of earthenware for which Týnec was famous in the period from 1791 to 1866.

There is also an exhibition on the history of the town of Týnec, a concert hall and an exhibition hall in the building. Nearby stands a Gothic tower of the Týnec Castle. It's used as the lookout with the view into the Posázaví region and there is the respected European summer domicile of the big bat. The Romanesque rotunda, used as the house of prayer by the Czechoslovak Hussite Church, it is also a part of Municipal Museum sightseeing.

Opening hours:

April – September Tue – Sun 10 a.m. – 12 noon and 1 p.m. – 5 p.m.

Městské muzeum, Hodějovského 48, 257 41 Týnec nad Sázavou

tel.: +420 605 715 133, e-mail: muzeum@mestoty nec.cz

<http://www.mestoty nec.cz/muzeum>

Visit the Bat's Maternity Ward

Bats (the large mouse-eared bat) have chosen the third floor of the Gothic tower of Týnský Castle as their maternity ward. They have their young ones in spring and rear them in summer. It is great fun to watch the bat families – come and have a look.

Regional events in Týnec nad Sázavou – a project of traditional social, cultural and sporting events lasting from spring to autumn for small and big ones alike.



NATURAL TRAILS



Settlements and villages were built as early as in the Middle Ages in the bend of the Sázava River. One of the most famous families that owned the land in the basin of Sázava was the family of Lords of Dubá nad Sázavou. The castles guarded the important trade path and the river ford. Only ruins have been preserved from these buildings, yet you can feel history breathing from the walls and discover a lot of poetic nooks.

POSÁZAVÍ ROUTE NR. 19

The Sázava river may be followed by the bicyclists from the source at Českomoravská Vysočina up to the confluence with the Vltava river. There is 245 km long route built along the river.

They bicycle – route leads around many historical sights, in some places through a hilly terrain, in other places on comfortable routes along the river. Railway connection in the Posázaví area, leading along the entire course of the river is an advantage of making a tour in the Posázaví area, it can transport bicyclists with the bicycles for different sections of the bicycle – route.

The south-eastern part of the Central Bohemia region – Posázaví – offers a lot of possibilities for rest and petting to know nature and history. The nature trails are one of them. They can be taken as a separate program or used as an additional walk when visiting other sights or tourism goals.

MEDNÍK NATURE TRAIL

One of the oldest Natural Trails, Medník, can be found approximately 15 kilometres southeast of Prague in a picturesque valley of the Sázava River and on the forested slopes below Medník Hill.

A larger part of the Natural Trail, which received the name after the Medník National Natural Monument, is known to the public mostly due to the dog's-tooth violet, a critically endangered flower, which grows in this area.

Fourteen information boards introduce Medník from all angles, enabling the visitors to learn about the local beech wood, the importance of forests and trees, and debris forests. You can also read the highlights from the geology, history of tramping, boating and tourism in the Posázavský Pacifik area.



BREJOV MILL



Brejov mill

You will find this mill in a pleasing country side on the bank of the Sázava river, 30 km from Prague. This is the right place for rest, relaxation, weddings, celebration, sport activities but also for all types of training, teambuilding and outdoor events.

The family hotel is from one side bathed by the beautiful Sázava river and from the other side surrounded by a beautiful garden in which there are seven bungalows, each one of them having own bathroom and five beds. On the hotel's first floor there are three training rooms with complete equipment, including the wifi Internet connection. On the second and the third floors, there are 55 beds available in 18 double, three beds and four beds rooms with own social facility. Most of them offer a romantic view of the Sázava river.

A parking lot, volleyball and football-tennis playground, a big fireplace, a room for bicycles and a pier for comfortable landing of ships are also a part of the area.

Sport activities

- Volleyball and football-tennis court, suitable terrain for Petanque and badminton
- Cyclists will receive a warm welcome; all facilities are provided
- A pier on the river will make the anchoring more comfortable; boats can be hired for a nice river trip
- Fishing in the Sázava River (fishing licence and permission required)

Mlýn Brejlov

Břežany 29, 257 41 Týnec nad Sázavou
tel.: +420 774 443 854
e-mail: info@brejlov.cz
<http://www.brejlov.cz>

Our restaurant offers various dishes; among others, you can try our home-made grilled sausage, garden salad seasoned with herbs from our garden and our excellent strawberry cake. You can reach us by our new ferry-boat on your afternoon stroll.



COMMUNITY CENTRE TÝNEC



Community centre TÝNEC

This traditional cultural centre in the region of the Sázava River offers a theatre, disco, restaurant, games room and a club, all in one historical building. The ballroom with a capacity of 600 people is supported by an all-round technology background and

trained staff are available for balls, school-leaving ceremonies, corporate events, seminars, assemblies and general meetings, conferences, concerts, theatre performances, lectures and fashion shows. The offered advantage is a comprehensive tailored service including accessory programmes.

The enclosed **GARDEN** of 4,000 m² is suitable for concerts, garden parties, Sunday gatherings with musical performances or just for some short-yet-refreshing relaxation within a small corner of nature over a cup of tea or coffee, either in the midst of, or after, a hectic working week.

We provide catering services for all different kinds of occasions: garden parties, wedding receptions, company events and receptions. We offer complete gastronomic service from decoration, through welcome drink to the supper. Our only criterion is the customer's satisfaction.

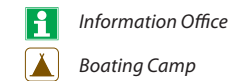
Is a certified place marked 'Cyclists Welcomed'. It is located on the Greenways Prague cycling trail – Vienna and near the Posázavská cycling trail, which also goes through the town. Apart from the usual standard services the Info Centre offers interesting **REGIONAL PRODUCTS** that demonstrate the skills of local craftsmen and can make for a nice gift from the Posázaví Region.

Společenské centrum TÝNEC

Klusáčkova 2, 257 41 Týnec nad Sázavou
tel.: +420 317 729 050, +420 775 290 032
e-mail: spolecenske@centrumtynec.cz
<http://www.centrumtynec.cz>



BOATING CENTRE



BISPORT
will • reliability • tradition

Boating trip

- the most beautiful cataracts from the door of our center
- steady unbreakable polyethylene canoes, kayaks, rafts
- free transport with a week vacation – Sázava, Vltava, Lužnice, Ohře, Berounka, Otava
- caring and personal approach to guests
- daily latest news on the state of water currents, maps, mileage, Týnec – Pikovice route video

Mountain bikes

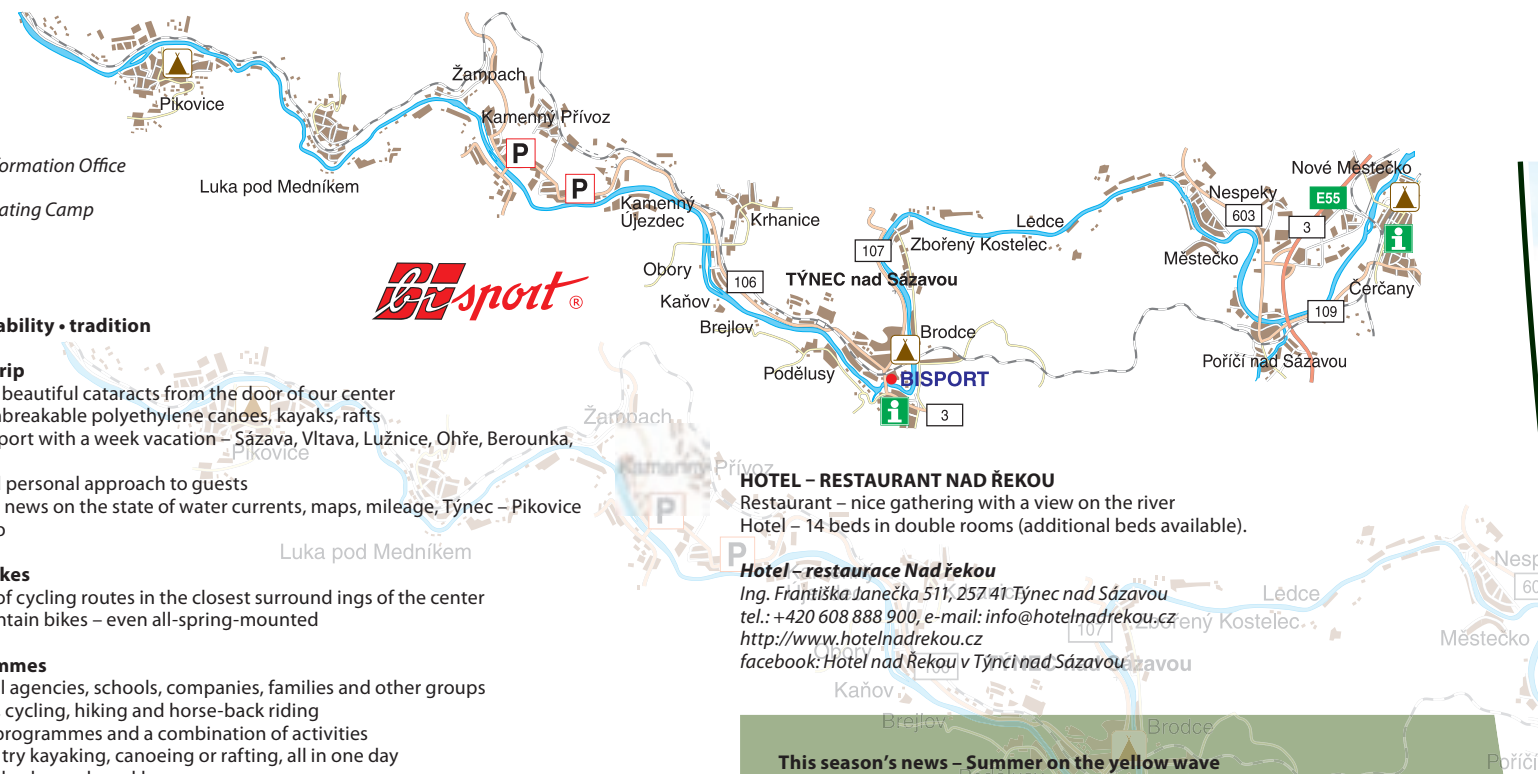
- wide range of cycling routes in the closest surroundings of the center
- quality mountain bikes – even all-spring-mounted

Sport Programmes

- Offer for travel agencies, schools, companies, families and other groups
- Water tourism, cycling, hiking and horse-back riding
- Culture-sport programmes and a combination of activities
- Opportunity to try kayaking, canoeing or rafting, all in one day
- One-day, multiple-day and weekly programmes
- Your programme will be led by professional young guides in Czech, English, German or other languages
- Option to receive refreshment according to your requirements – a picnic, snacks
- Option of a tailor-made programme made to your requirements
- Option to order a CD with photographs or a DVD with a movie documenting your programme

BISPORT

Ing. Františka Janečka 511, 257 41 Týnec nad Sázavou
tel.: +420 317 701 460, +420 317 701 704, +420 317 701 907 – 8, +420 777 335 618
e-mail: info@bisport.cz, <http://www.bisport.cz>
facebook: Bisport Půjčovna Lodi



HOTEL – RESTAURANT NAD ŘEKOU

Restaurant – nice gathering with a view on the river
Hotel – 14 beds in double rooms (additional beds available).

Hotel – restaurace Nad řekou

Ing. Františka Janečka 511, 257 41 Týnec nad Sázavou
tel.: +420 608 888 900, e-mail: info@hotelnadrekou.cz
<http://www.hotelnadrekou.cz>
facebook: Hotel nad Řekou v Týnci nad Sázavou

This season's news – Summer on the yellow wave

Special from 1st May to 27th June 2010

Accommodation – a TENT for 1 CZK plus appropriate fees, children stay for free

Special from 28th June to 30th August 2010

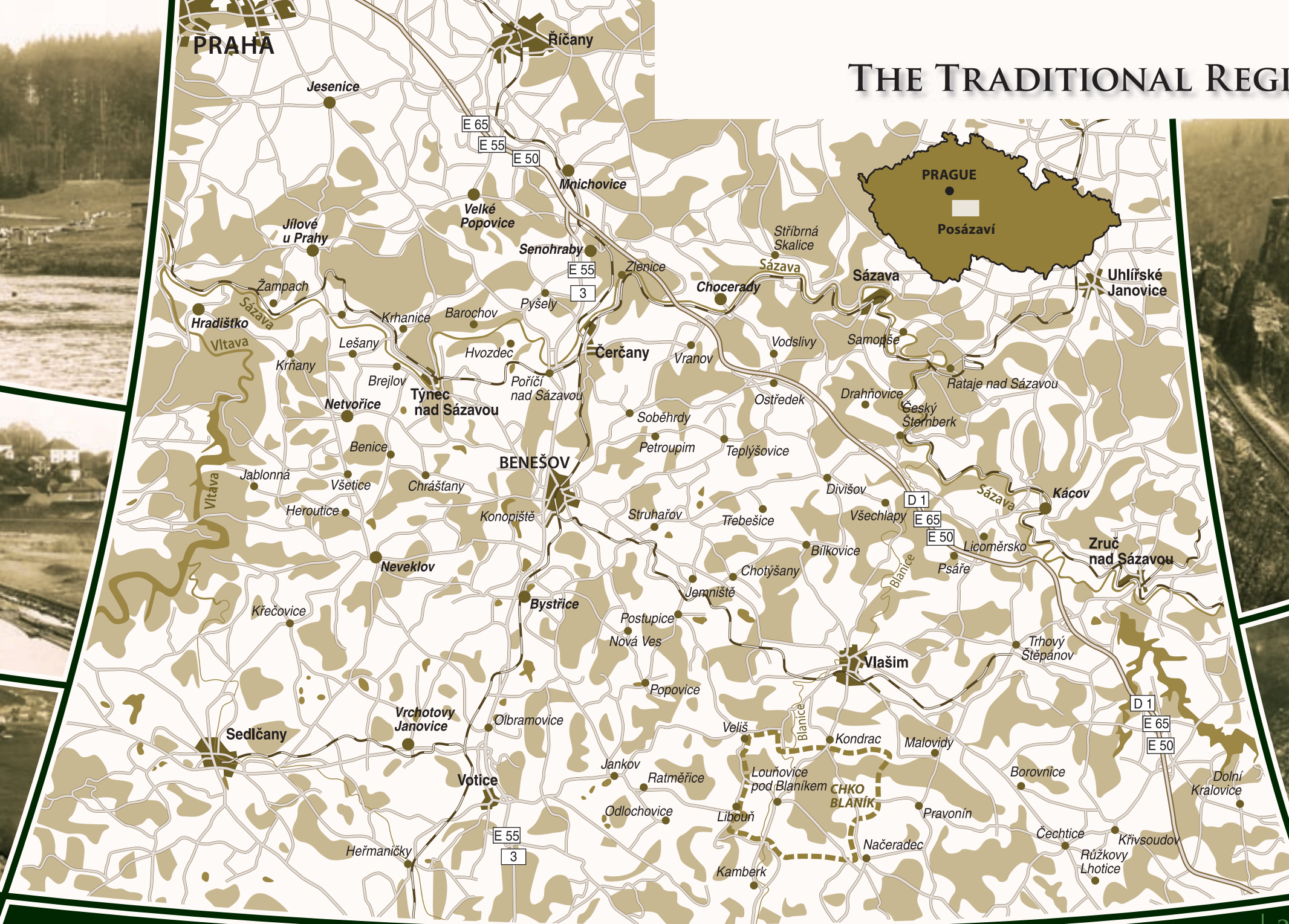
A MOJITO FREE OF CHARGE at the beach bar for women; children stay for free

Conditions:

hiring of equipment from Bisport spol. s.r.o. • accommodation in the Sázavský Ostrov camp • paid booking • advantages apply to boat trips from Ledec, Kácov and Sázava



THE TRADITIONAL REGION POSÁZAVÍ



VŠETICE HOTEL



The Všetice Hotel is located in a village of the same name approximately 40 kilometres south of Prague. The hotel is part of the Statek Všetice Farm, a complex that also boasts an indoor riding hall with a 55 x 21 metre sand riding-ménage and heated stands for spectators.

There is also a bar with a view into the riding-hall. The bar has a capacity of 100 people; audio and video equipment is available.

The hotel offers 42 beds in 20 double to four-bed stylish rooms and apartments. Extra beds can increase the capacity up to 61 people.

Fully equipped conference facilities, a reception hall for 76 people and two small parlours for 14 and 8 people are available.

The stylish hotel restaurant seats 100 guests and there are 30 more places on the outside terrace.

There is a dance floor and a concert stage. Relaxation services include an outside swimming pool, a sauna, a Jacuzzi, massages, horse-riding courses and horse-riding trips.

The complex also includes an extensive garden with two ponds. The entire place is suitable for various company events as well as romantic wedding receptions.

Come to have a romantic wedding at Všetice; the wedding apartment for newly-weds is free of charge

Hotel Všetice

Všetice 6, 257 44 Netvořice
tel.: +420 722 903 552
e-mail: hotel@hotel-vsetice.cz
<http://www.hotel-vsetice.cz>



BAROCHOV RESORT

The Barochov Resort is an outdoor and recreational centre situated in the midst of meadows, pastures and forests near the banks of the Sázava River.

The journey from Prague takes 45 minutes. Barochov lies near the main road E55 on route to České Budějovice. The centre caters for families, offering all-day activities for children and adults alike.

As the only centre in the Czech Republic they have the Battlefield Live laser game rifles that add a realistic feeling to the Battlefield computer games. We also have an adrenaline rope-way in the middle of the forest with 40 elements of different levels of difficulty for adults. It is located 6-10 metres above the ground, has 4 rope-ways (Flying Fox) and a Tarzan's Spin.

Other activities include terrain horse-riding or horse-riding lessons with an instructor for beginners as well as advanced riders. Basic communication with horses, looking after them and feeding them -- you can learn all this during a weekend or a week-long course.

The complex provides accommodation in single, double, three-bed and four-bed rooms; there is also a three-bed and six-bed apartment. All rooms are en suite and have a shared kitchenette. All rooms are equipped with a TV, a DVD player and a mini-fridge. Apartments also have a fully equipped kitchenette with an electric cooker and a fridge. Children under 2 stay free of charge. Pets can be brought according to previous agreement.

Areal Barochov

Barochov 7, 251 67 Pyšely
tel.: +420 721 110 000
e-mail: info@arealbarochov.cz
<http://www.arealbarochov.cz>
facebook: Barochov



ČESKÝ ŠTERNBERK CASTLE



The south forward rampart of the Český Šternberk castle, so called "dungeon," is a part of a sophisticated fortification system built by the provincial supreme judge Petr Holický of Sternberg at the turn of the 15th and the 16th century and finished by his son John. This rampart is one of the best preserved objects of the lately Gothic fortification architecture, within the genesis of the Middle-European fortification structures of the 15th century, exceeding by its significance the framework of Bohemia.

Opening hours:

April, October	Sat, Sun, holidays	9 a.m. – 5 p.m.
May, September	Tue – Sun	9 a.m. – 5 p.m.
June – August	Tue – Sun	9 a.m. – 6 p.m.
January, February, March, November, December:		per order

The castle is open all year round for groups with prior booking.

Hrad Český Šternberk, 257 27 Český Šternberk 1
 tel.: +420 317 855 101, +420 317 855 166
 fax: +420 317 855 118
 e-mail: info@hradceskysternberk.cz
<http://www.hradceskysternberk.cz>

When touring the Sázava riverside, do not omit to visit the Český Šternberk castle, for you will be rewarded with a view of the gothic castle majestically spanning over the Sázava river. During the excursion you will be allowed to take a glimpse of its more than seven-hundred year history, connected mainly with the Sternberg family.

The castle was founded around year 1241 by Zdeslav of Sternberg. The name was derived from the coat-of-arms, a golden octal star, and germanised according to contemporary custom. The last greater adaptations were made in the early Baroque period.

The tour takes you through fifteen rooms richly furnished with stylish furniture and a collection of family portraits, porcelain, weapons, hunting trophy's, silver miniatures etc. Among the most famous pieces exhibited is doubtless a collection of graphic prints from the time of the Thirty-years war.

Wandering through the history of Šternberk will take place at the castle of Český Šternberk in the days of October **23 - 24, 2010 from 9 a.m. to 5 p.m.**: untraditional tours in costumes • animated history • accompanying program: juggler, falconer, cannonners • renowned Šternberk cookies • a medieval pub • an ordinary fee

Come and visit us, we are looking forward to You!





GUESTHOUSE ČTYŘLÍSTEK

On the same place, right underneath the castle and on the main town square, there is also a family guesthouse with one triple and three double rooms with comfortable beds, nice bathrooms and other equipment. The smell of

freshly baked cakes will wake you up in the morning; the peace and coziness of the place with the rich history will lull you in the evening.

Pension Čtyřlístek, Hana Filipová
257 27 Český Šternberk 45
tel.: +420 724 359 073
e-mail: pension.ctyrlistek@seznam.cz

ŠTERNBERK CAKES

The square of Český Šternberk is ready to caress both your spirit and your stomach. The local baker makes delicious poppy, cottage cheese, apple, damson cheese, and blueberry cakes. The bakery is a part of the local groceries shop, where the customers can buy the cakes or order them for their wedding parties, family celebrations or just for the breakfast. Or they come and taste this delicacy with a cup of coffee at our terrace.

Šternberské koláče, Jan Filip
257 27 Český Šternberk 45
tel.: +420 607 177 944

The Šternberk Cup Fair.

There will be a Cup Fair held in the extramural settlement of the Český Šternberk castle on July, the 3rd 2010. The goal is to introduce this beautiful corner of the Central Bohemia district not only from the view of a castle's visitor as a mansion but also in connection with the extramural settlement, no less significant place where there people lived in the past and where one can spend an interesting and pleasant day also today.



SÁZAVA

There are many places around the town where our forefathers worshipped St. Prokop and they have its unrepeatable and mysterious atmosphere until today. The most famous ones are the near chapel of St. Prokop and the spring V Lázních where the hermit Prokop was supposed allegedly to meet with the knight Oldřich and to establish the famous monastery.

In honour of Jiří Voskovec the theatre ensemble has been holding here a show of music amateur theatres called Voskovecova Sázava.

MONASTERY IN SÁZAVA

The monastery was founded by Prince Ulrich and the hermit Procopius in 1023. It houses an exhibition called "Old-Slavic Sázava". You can visit the Baroque church dedicated to St. Procopius and see the underground crypt. There are uncovered foundations of the Holy Cross Church from the 11th century in the northern monastery garden.

Opening hours:

April, October	Sat and Sun	9 a.m. – 12 noon and 1 p.m. – 4 p.m.
May, August	Tue – Sun	9 a.m. – 12 noon and 1 p.m. – 6 p.m.
September	Tue – Sun	9 a.m. – 12 noon and 1 p.m. – 5 p.m.

Národní památkový ústav

správa kláštera v Sázavě, 285 06 Sázava 72
tel.: +420 327 321 177
e-mail: sazava@stc.npu.cz
<http://www.klaster-sazava.cz>



COMPLEX SÁZAVSKÝ OSTROV



The new Sázavský Ostrov Relaxation and Accommodation Complex in the town of Sázava takes up an area of over 60,000 square metres. You can find it in the splendid landscape of the Central Posázaví Area (45 km southeast of Prague, exit 34 from the D1 motorway).

It provides accommodation in modern apartments, cozy mobile homes and lately also in a hotel building and a pleasant camp (tents and caravans).

It offers an ever growing selection of entertainment for those who seek culture, want to have a barbeque or sit by a fire, for sport enthusiasts, mothers with children, schools, preschools, companies or passers-by, as well as healthy lifestyle enthusiasts.

Guests and visitors will surely appreciate the popular restaurant located directly in the complex, scores of sport grounds and attractions for free time and other ways to spend a pleasant day or unforgettable holidays.

There is a children's playground with a ropeway, football, football-tennis and volleyball courts, an outdoor bowling line, skittles and table skittles, a mini-golf and golf putt, outdoor ping-pong, a huge trampoline, boats and treadles.

Nature enthusiasts will enjoy the well-treaded cycling trails and tourist tracks, and mushroom pickers and fishing enthusiasts will also benefit from their stay. An abundant fishing ground (401001 Sázava 5) is located directly in the area.

This season's new offer – Summer on the yellow wave
Bisport & Kemp Sázavský Ostrov Boating and Tourist Centre – see page 22 – Boating Centre.

Sázavský ostrov
285 06 Sázava
tel.: +420 602 696 680, +420 724 354 250
e-mail: recepce@sazavskyostrov.cz
<http://www.sazavskyostrov.cz>



The modern three-star hotel with parking area is situated approximately 33 miles southeast of Prague between the townships of Tichonice and Kácov. Surrounded by woods only a couple of feet from the Sázava River you will find everything you need to have a nice vacation, organize business or social meetings or trainings.

The hotel offers 20 double rooms, 2 four-bed rooms and 3 apartments with private bathroom and WC, color TV with satellite broadcasting, telephone, radio-alarm clock and minibar.

The area also has accommodation in log cabins with bathrooms or cabanas suitable especially for trainings or sport events. The restaurant can seat and board 90 – 100 people. After a nice lunch or dinner one may stay in the bar or patisserie.

Sporthotel Kácov
V Hájku 307, 285 09 Kácov
tel.: +420 317 851 471, fax: +420 317 851 484
e-mail: management@sport-hotel.cz
rezervace@sport-hotel.cz
<http://www.sport-hotel.cz>

An outdoor 25-feet swimming pool with night lighting and a paddling pool is ideal for active leisure as well as 2 tennis courts with synthetic surface and lighting, 2 volleyball courts with synthetic surface, lawn football field and a basketball field. You may also play miniature golf or table tennis. There is also a sauna, massages or a bike rental.

SPORTHOTEL KÁCOV



DIVIŠOV



THE TRAIL OF KNIGHT JAN KRYŠTOF ŠIC

The nature trail has 10 resting points. It leads from Divišov across the Vrchla hill, Měchnov village, by the Brtničák pond, Český Šternberk castle to the village common of Český Šternberk or the other way round... You will find out a lot about game management, Jewish religion, nature around Divišov, agriculture or the castle Český Šternberk. The overall length of the trail is less than 7 kilometres (4,3 miles) and you can walk the whole way in about 2 or 3 hours.

The figure of Knight Kryštof Šic of Měchnov will accompany you along the entire trail. Allegedly, this knight lived in the Divišov Area in the first half of the 17th century. Extracts from his diary will help you to get insight into ancient times and see history through the eyes of the pupils of a local elementary school. The trail is especially suitable for a one-day family trip.

Visit this place and help us to bring history to life!

MUSEUM OF THE JEWISH COMMUNITY LIFE IN DIVIŠOV

The Jewish settlement in Divišov dates from before year 1685. The synagogue, where the museum is located, was built in the first half of the 19th century in a late Classicist style with an apse. The reconstruction of the building, which was finished in autumn of 2004, was subsidised also by the European Union. The exhibit, mapping the life of the Jewish settlement in the region, was conceived by the joint effort of the municipal association CHOPOS, the Divišov municipality, the Jewish museum in Prague and Museum of Podblanicko region in Vlašim. The first part of the exhibit is dedicated to the extensive project of reconstructing small sacral buildings on the territory of the municipalities associated in CHOPOS.

Muzeum života židovské obce v Divišově

Šternberská 158, 257 26 Divišov
tel.: +420 317 855 224
e-mail: muzeum.divisov@chopos.cz
<http://www.chopos.cz>



OSTŘEDEK, DRAHŇOVICE

OSTŘEDEK, THE CHAMBER WHERE SVATOPLUK ČECH WAS BORN

The Baroque chateau with St. Jan Nepomuk's chapel from 1741 was built on the site of a 14th century citadel. From a historical viewpoint it is noteworthy that the writer Svatopluk Čech was born in the local chateau in 1846. His father, František Jaroslav Čech, was the estate keeper. The chamber, where the poet was born and which can still be seen in the chateau today, was established by the people from Ostředeck as early as 1898.

Ostředeck

Zámek 1, 257 24 Ostředeck
tel.: +420 317 795 430
e-mail: ostredeck@chopos.cz
<http://www.chopos.cz>

Opening hours:

pursuant to telephoned bookings only

TOURSIT GUESTHOUSE IN OSTŘEDEK

The tourist guesthouse is suitable not only for recreational stays, but it is also a quality base for company celebrations, weddings, family parties, trainings, school trips and sport trainings. The total capacity is 20 beds. One single, six double, one three-bed and one four-bed rooms are available. All rooms have a kitchenette with a fridge and a microwave. All rooms are en suite and equipped with a TV. The offer includes trekking bicycles.

Ubytovna Ostředeck

Ostředeck 43, 257 24 Chocerady
tel.: +420 317 795 428, +420 725 746 392
e-mail: ubytovnaostredeck@seznam.cz
<http://www.restauraceostredeck.wz.cz>

DRAHŇOVICE

This tiny picturesque village lies almost at the end of the world. Its green is a pleasant place, where adults may rest and children may frolic. Technology and history enthusiasts can visit the exposition of fire-fighter equipment and tools. Cyclists as well as trekkers can rest and renew their strength in a small pub called Na Konci světa (At the End of the World); it offers delicious food and also organises trips on horse-back.

Obec Drahňovice

tel.: +420 317 855 192
e-mail: drahnovice@chopos.cz
<http://www.chopos.cz>





The Baroque chateau Jemniště was built in 1720 – 1725 and today belongs to Jiří Sternberg.

The Jemniště chateau is the right place to carry out a romantic engagement dinner, a wedding or a family party, or a company dinner.

Custoza Cafe and a small shop will make your waiting for the tour more pleasant, or you may sit by the fire in the beautiful local apartments. Bring your children to see the theatre and animals during the season and invite your friends for a delicious meal in the restaurant. Let us look after you and spoil you; come to relax.

2010 news

The first change is the newly open **ZAMECKÁ RESTAURANT** in the former stables, which serves delicious food. Although located directly at the courtyard of the chateau, it lies aside from the main tourist route so mums with pushchairs are also welcome.

The second change of this season is the option to book a guided tour of the chateau park. A park-landscape architect will outline the history of the development of the chateau park, talk about the valuable trees and definitely answer all your eventual questions during the approximately one-hour tour. Thirdly, we have re-designed the wedding halls. There are two adjacent rooms.

The first one is furnished with screens adorned by orchid and hummingbirds motifs, while the second one is designed in the classical chateau colourful style. Wedding rooms are not traditionally white but very colourful, so that not even the tiniest details on the bride's white dress get lost.

Chateau is open to public:

January – March

April, May

June, September

July, August

October

November, December

per order only

Sat, Sun, Hol

daily except Mon

daily except Mon

Sat, Sun, Hol

9 a.m. – 4.30 p.m.

9 a.m. – 5.30 p.m.

9 a.m. – 6.30 p.m.

9 a.m. – 5.30 p.m.

per order only

Summer theater at the Jemniště chateau

Performances for children and adults are put on every Friday during the summer holidays, starting at 7 p.m.

- 2. 7. Teátr Víti Marčíka Theatre – Prince Bajaja
- 9. 7. Já to jsem Theatre – Royal Wisdom
- 16. 7. Kejklířské Thetre of Vojt Vrték – Magical Marble
- 23. 7. Koňmo Theatre – Water-Sprite Story
- 30. 7. Koráb Theatre – Hero Story
- 6. 8. Kapsa Theatre – How Uška the Ladybird Lost her Seventh Dot
- 13. 8. Půdy Theatre – Mathew the Shoemaker
- 20. 8. Malé divadélko Praha Theatre – The Little Red Riding Hood
- 27. 8. Mimotaurus Theatre – Look at the SillyTom-Noddy

Programme subject to alterations.

Zámek Jemniště

Jemniště 1, 257 01 Postupice

tel.: +420 731 903 995

tel./fax: +420 317 796 212

e-mail: zamek@jemniste.cz

sternberg@jemniste.cz

<http://www.jemniste.cz>

<http://www.svatbanazamku.cz>



We would like to invite you into the newly landscaped **ROSARIO**, a rose garden, situated behind the main chateau building. You should also see the new additions to the chateau menagerie: **two racoons - Matylda and Monty.**





THE TOWN OF VLAŠIM

Has a long and rich history. The original gothic castle built on the point of land over the Blanice river by the Janovic kin was mentioned in written source for the first time in 1318. The kin of the Lords of Jenštejn bought Vlašim in 1363. Jan Očko of Vlašim, stemming from this kin became second Prague Archbishop in 1364, being promoted to the first Czech Cardinal in 1378.

CLUB HALL

accommodation in peaceful ambience, 15 beds • enclosed premises with extensit garden • rooms equipped with toilet, shower bath, wash-basin • room with barrier-free access • free internet access in rooms • equipped kitchen available • rooms for workshops and company events • technology for presentations • bouldering wall 8 x 3 m within the premises • significant discounts for non-profit organizations

Spolkový dům, Palackého nám. 65, 258 01 Vlašim
tel.: +420 737 505 605, +420 731 024 683
e-mail: info@spolkovydum.cz
<http://www.spolkovydum.cz>

VLAŠIM OPEN-AIR SWIMMING POOL

tel.: +420 603 923 404
e-mail: jirizelingr@centrum.cz
<http://www.koupalistevlašim.cz>

Opening hours:

1st June – 31st August from 10 a.m. to 7 p.m.
Sports facilities within the premises are available beyond the opening hours upon telephonerreservation.

Bicycling route Vlašim alleys

The route, being long in total 32 km, leads through the most interesting locations around Vlašim along both the current and renewed paths, many of which have been planted with new alleys.



CZECH UNION OF NATURE CONSERVATORS

Podblanicko is among the regions, which are sought after by tourists for over 100 years thanks to their well-preserved nature. Within the region's territory are the Natural preserve area Blaník, 3 natural parks, 17 preserve areas and 159 memorial trees.

A visitor can find romantic corners, picturesque views of the countryside and encounter many rare species of flora and fauna throughout the region. The Czech union of nature conservators in Vlašim tends to the Podblanicko region nature for 15 years already and its goal is to preserve it for future generations. Besides terrain excursions and plant and animal watching we also offer visitors a possibility to see wild animals in the Handicapped animal station in Vlašim.

It is possible to order:

- trip to nature and protected areas • trip to CHKO Blaník (Protected Landscape Area) • visiting palace gardens in Vlašim • visiting memorable trees • watching birds

Podblanické ekocentrum ČSOP Vlašim

Pláteníkova 264, 258 01 Vlašim
tel.: +420 317 845 169, fax: +420 317 845 965
e-mail: vlasim@csop.cz, <http://www.csopvlašim.cz>

OBSERVATORY IN VLAŠIM

Regular observations with interpretation for public are held in the Vlašim Observatory on Fridays from the beginning of April till the end of September. In the months of April and September the observations start at 8 p.m., while in the months from May to September the observations start at 9 p.m.



Vlašimská astronomická společnost

Hvězdárna ve Vlašimi
B. Martinů 1341, 258 01 Vlašim
tel.: +420 317 842 390
e-mail: hvezdarna@vas.cz, <http://www.vas.cz>



CHATEAU AND PARK IN VLAŠIM

The chateau of Vlašim, originally medieval castle referred to in written documents from 1318 already, became the headquarters of the museum in 1988. The visitors may see the expositions "Chateau Parks", "History of Vlašim Chateau", "Countryside in the Region of Blaník Hill", "Precisely Focused" (tradition of huntsmanship and armament) and the longlasting exposition named "The Mirror of the Past".

The visitor's experience is augmented by the historical interiors of the chapel, fresco and stucco decorations of the halls, arrays of exposed antiquities, natural and technical exhibits. There are also concerts of classical music, lectures and gallery exhibitions organized at the chateau.

Opening hours of Vlašim museum:

March – June	Tue – Sun	9 a.m. – 12 noon 1 p.m. – 4 p.m.
July – August	Tue – Sun	9 a.m. – 12 noon 1 p.m. – 5 p.m.
September – December	Tue – Sun	9 a.m. – 12 noon 1 p.m. – 4 p.m.



The place of interest is the view of the chateau tower and the possibility to visit the chateau basement where the exposition The Secret of the Basement is installed.

Muzeum Podblanická Vlašim

Zámek 1, 258 01 Vlašim
tel.: +420 317 842 927
e-mail: muzeumvlasim@iol.cz
muzeumvlasim@seznam.cz
<http://www.muzeumpodblanicka.cz>

Středočeský kraj

The valley of the Blanice river neighbouring with the chateau in the area of former gamepreserve and chateau garden was transformed by then lord of the manor Carl Joseph of Aeusperg and his wife Maria Josephine of Trauson into the chateau park in the romantic style in the last quarter of the 18th century. The park was gradually developed into the unique natural landscaping formation with number of romantic constructions and nooks appreciated as one of the most beautiful parks in Bohemia shortly after its establishment already.

In present, the chateau and the park are open to public, including the majority of the romantic constructions housing different expositions or restaurants.

Opening hours of Information Office:

Year round	Mon – Fri	8.30 a.m. – 12 noon 12.30 p.m. – 4.30 p.m.
1 st May – 15 th September	Sat – Sun	9 a.m. – 4 p.m.
Seasonal tour of the park, internet access		

Turistické informační centrum Vlašim

tel.: +420 317 847 207
e-mail: info@vlasimskypark.cz
<http://www.vlasimskypark.cz>

Fairytale summer

- | | |
|--------|--|
| 3. 7. | ROMANETO Theatre – Doggy and Pussycat Go to the Theatre |
| 10. 7. | KAPSA Theatre – How Thursday the Mole Swallowed a Bait |
| 17. 7. | KEJKLÍŘ Theatre Chorus – Three Golden Hairs |
| 24. 7. | Téměř divadelní společnost Theatre – Magical Whistle and Swan Maiden |
| 31. 7. | ŠUS EKO Theatre – Fairy Tales |
| 7. 8. | ROMANETO Theatre – Indian Story |
| 14. 8. | BUCHTY a LOUTKY Theatre – Golden Goose |
| 21. 8. | Malé divadélko Praha Theatre – Snow White |
| 28. 8. | KAPSA Theatre – How Kuba Looked for his Luck |





KRAJ BLANICKÝCH RYTÍŘŮ

The region of the Blaník Knights called after the Blaník Hill is situated in the heart of the Posázaví. The legend says that an army under the command of

St. Wenceslas, the patron of the Czech land, sleeps inside the mountain and waits to go up to help the Czech nation at the worst of times. Up to now the army has not intervened yet, though nearly did several times. Occasionally a knight comes out of the mountain to check up how the people of Bohemia manage.

The region of Blaník knights is the place of natural beauties and rich history. In its heart there is a forested twin hill of Velký (Big) and Malý (Small) Blaník that gave its name to the region.

LOOKOUT TOWER ON VELKÝ BLANÍK

The wooden covered tower of 29,5 m height is situated in the altitude of 638 m on top of the Velký Blaník hill. It was built in 1939 – 1941 from the initiative of the Club of Czech Tourists.

Opening hours:

April – September	Tue – Sun	10 a.m. – 5 p.m.
October – March	Sat, Sun, holidays	10 a.m. – 4 p.m.

NATURAL PRESERVE AREA BLANÍK ADMINISTRATION

provides:

- guide service for organised groups
- thematic excursions to select localities
- lectures

Správa Chráněné krajinné oblasti Blaník

Vlašimská 8, 257 06 Lounovice pod Blaníkem

tel.: +420 317 852 654, fax: +420 317 701 916

e-mail: blanik@nature.cz, <http://www.blanik.ochranaprirody.cz>

NATURE TRAIL WITH A KNIGHT TO THE BLANÍK MOUNTAIN

The nature trail begins at the parking place at the foot of Velký Blaník over Louňovice pod Blaníkem, leading across the Velký Blaník mountain top to the parking place in Kondrace along the red tourism mark. The trail is long 4 km and there are 14 educational stops and 17 playful stops for children. Parking both cars and buses is possible on both ends of the trail, this over the villages of Kandrak and Louňovice pod Blaníkem.



LEGENDARY BLANÍK MOUNTAIN

On the Velký Blaník mountain top there is a view tower with the possibility of refreshment, there are resting places built on the trail. There is a steep ascending before the Velký Blaník mountain top. Therefore we recommend to the less fit visitors to choose a little bit longer route along the wood path. The trail is not suitable for prams, due to the same reasons. For prams we recommend to use also the wood path.

The Blaník Knight is the patron and as well the guide along the entire route. He acquaints with the nature of Velký Blaník and its surroundings, the history of its settlement or the Baník Knights reputations. You can see a copy of the National Theatre foundation stone coming from Blaník or the Knight sculpture. Also an outdoor geologic exposition of the Podblanicko area is a part of the trail where 21 big samples of rocks are exhibited.

CHATEAU LOUNOVICE POD BLANÍKEM

The first written reference to the site dates back to 1149 and mentions a konvent of the Premonstratensians, founded in the so-called Moon Valley. The Lounovice konvent was ruined in 1420 by the Tabor forces that then dominated the whole region.



The museum displays findings of the archaeological research of the konvent, installed in the chateau by the National Museum in 1981. During a reconstruction in 1982, a band of sgraffito was uncovered, depicting an interesting view of the biblical theme of The Flood. Above the bossage of the entry portal there is the coat of arms of the archbishops as a reminder of the times when the chateau was in their possession. The collections also include a display of "The Old-

est History of Lounovice pod Blaníkem" and a display dedicated to apiculture. Lounovice pod Blaníkem is also the birthplace of the music composer Jan Dismas Zelenka (1679 – 1745).

Chateau opening hours:

April – December Tue – Sat 9 a.m. – 12 noon and 12.30 p.m. – 3.30 p.m.

Beyond opening hours upon reservation by telephone.



VOTICE



THE TOWN OF VOTICE

Is situated right on the border of the region that the writer Jan Herben called the "Czech Siberia" – the region typical not only for cooler weather but also for number of smaller historical objects and natural beauties. You can admire the reconstructed Church of St. Wenceslaus in the town, which is a true copy of the church of Christ's Tomb in Jerusalem dating from 1685 and the Marian group of statues in the centre of the town. Also worth visiting is the well preserved

and maintained Jewish cemetery with the exhibition 'Jews and Jewish Monuments in the Votice Area'. The Ethnographic museum boasts a very nice exhibition of historical exhibits that witness the way of life in the Votice Area in the olden times.

The fans of hiking and biking can set off for the tracks or rides in the neighborhoods. The settlement Kaliště located in the Natural Park Džbány-Žebrák offers one of the most beautiful views of the region.

Cultural Summer in Votice

The U Modré Kočky (at the Blue Cat) courtyard will be hosting the cultural summer for the second time. This festival of fairytales and concerts was much appreciated last year.

Informační centrum Města Votice a Mikroregionu Džbány

Komenského náměstí 177, 259 01 Votice

tel.: +420 317 812 505, e-mail: infocentrum@votice.cz

<http://www.votice.cz>, <http://www.mikroregiondzbany.cz>

INSTRUCTIVE PATH „AROUND VOTICE FOR COGNITION“

Set off with us for the tour called "Around Votice for Cognition". The path begins and ends in the square of Votice and is 8 km long. The tour includes nine stops with commentary acquainting the visitors with flora and fauna of the neighbourhoods, taking you to the St. Adalbert Chapel, informing you why is this area called the Czech Siberia, acquainting you with famous people whom the local countryside charmed, telling you the story of the gallows hill, of the majestic Votice maple-tree and other attractions of the region.



DŽBÁNY-ŽEBRÁK NATURAL PARK

Romantic Chateau Parks

Gardens and parks that surround the chateaus in Vrchotovy Janovice, Ratměřice, Odlochovice and Lišeň are pleasant places for peaceful and romantic walks. The park in Ratměřice boasts the biggest redwoods in the Czech Republic.

Nature Trails

The Natural Trail 'In the Footsteps of the Battle of Jankov' will inform you about a great battle of European history, where the army of the Emperor fought the Swedish army in 1645. You can start the trail at Jankov or Ratměřice and choose a trail according to your abilities. You can also walk the 'Around the Ponds to the Viewing Pavillion' trail in Jankov.

The 'In the Footsteps of Sidonie Nádherna' connects Vrchotovy Janovice with the nearby village of Obramovice. It has 7 stops and is 8 kilometres long.

Sacral Monuments

You can visit the preserved Jewish cemeteries in Votice and Neustupov. The Calvary near Miličín represents one of the highest hills of the Miličinská Hill-Country. The Stations of the Cross will lead you up the top, adorned by a chapel. A Romanesque rotunda is the landmark of the village of Libouň. You can see the local church in nearby Ratměřice; it is open from May to September, from 10 a.m. to 6 p.m.

Fire Brigade Expositions

You will find two small fire brigade museums in Ratměřice and nearby Odlochovice. They house several fire engines, including still fully working horse-drawn fire pumps. You will also see the contemporary fire brigade uniforms, flags and symbols. You can see the exhibits at any time thanks to the unusually designed expositions that can be viewed from outside through large-scale show windows.



NESVAČILY, VOTICE



FLYING FIELD NESVAČILY

The best view of the countryside is said to be from the saddle of a horse. The Posázaví region is the place with the biggest concentration of ridinghalls, farms and horses breedings at the Czech Republic. If you like a countryside passing under you, you can fly over the Posázaví region by plane or a balloon. The view of the Sázava river, castles and chateaus is really an unforgettable experience

Ballooning CZ s.r.o.

Na Vrcholu 7, 130 00 Praha 3
tel.: +420 603 337 005, tel./fax: +420 222 783 995
e-mail: ballooning@ballooning.cz, <http://www.ballooning.cz>

Letecká škola F AIR

Flying field Benešov, 257 51 Bystřice
tel.: +420 317 793 820, +420 606 623 610, +420 777 623 033
e-mail: f-air@f-air.cz, <http://www.f-air.cz>

Letecká škola BEMO AIR

Flying field Benešov, 257 51 Bystřice
tel.: +420 317 793 529, +420 603 202 884, +420 604 335 213
e-mail: info@bemoair.cz, <http://www.bemoair.cz>

GLADIER AEROBATIC CLUB o. s.

Regular member of the Aero-club of the Czech Republic
GLIDING CENTRE BENEŠOV, Flying field Benešov Benešov, 257 51 Bystřice
tel.: +420 603 927 241, +420 603 453 297
e-mail: gac@centrum.cz, <http://www.akgac.aero>

PROTECTION OF FAUNA IN THE CZECH REPUBLIC

The Protection of Fauna in the Czech Republic manages a Station for Wounded Animals, carries out specific projects of the species protection, provides care of the preserved natural locations in the region. Within the scope of the activities of its Educational Center, the association offers educational programs for schools, lectures, workshops, naturalistic excursions, excursions into the Station for Wounded Animals, exhibitions and other events for schools, organizations and public. The association also provides the services of environmental consulting.

Opening hours: April, May, October Mon – Sun 1 p.m. – 3 p.m.
June – September Mon – Fri 9 a.m. – 3 p.m.
Sat, Sun 1 p.m. – 4 p.m.

Ochrana fauny ČR, Zámecká ul., P. O. BOX 44, 259 01 Votice
tel.: +420 317 813 178, +420 603 259 902
e-mail: info@ochranafauny.cz, <http://www.ochranafauny.cz>



CHATEAU VRCHOTOVY JANOVICE

This originally stone stronghold of the noblemen of Janovice, protected by a moat, was gradually converted into a manor house in the Renaissance style, becoming the seat of the Votice branch of the counts of Vrtba in the 17th and 18th centuries. The last major reconstruction occurred in the mid 19th century, when the chateau received its current, neo-gothic look.

The chateau has belonged to the National Museum for over 40 years. It offers several permanent displays: "Society in 19th Century Bohemia", presenting life in Bohemia during this period; "Rilke, Kraus and Vrchotovy Janovice", acquainting visitors with the family of the last private owners of the estate, and in particular with the person of Sidonie Nadherná; and the "Czech Bellfoundry" display, guiding visitors through the history of bell making in the Czech lands. A visit to the estate may be concluded in the ancient landscaped park around the chateau.

Chateau is open to public:

April, October	Sat, Sun, Hol	9 a.m. – 12 noon and 1 p.m. – 5 p.m.
May – September	Sat – Sun	9 a.m. – 12 noon and 12.30 p.m. – 3.30 p.m.

Zámek Vrchotovy Janovice

257 53 Vrchotovy Janovice
tel.: +420 317 835 181
e-mail: vrchotovy_janovice@nm.cz
<http://www.nm.cz>



Czech campanology – the production of bells in the area of Bohemia and Moravia.

A substantial part of the National Museum's historical collection of bells, totally composed of around one hundred pieces, is presented in the authentic environment of the former water fortress. The bell production technology, bells and small bells from the Middle Ages up to the 19th century; master works of the leading bell-makers from the Renaissance Bohemia below to the most significant ones.





IMPORTANT CONTACT INFORMATION

ASSISTANCE FOR YOU

FIRE BRIGADE
150



AMBULANCE
155



POLICE
158



EMERGENCY NUMBER
112

SOS

Medical emergency
Rudolf and Stefanie Hospital in Benešov

tel.: +420 317 756 485
tel.: +420 317 756 111



ASSISTANCE FOR YOUR CAR

VEROLD Benešov, spol. s r.o., Na Červených vrškách 1490, 256 01 Benešov
Servis tel.: +420 317 723 411, **SERVIS 24 – ÚAMK** tel.: 1230



ASSISTANCE FOR YOUR BICYCLE

Cykloservis J. Břečka, Pražská, Sázava
Cykloport NOVOTNÝ, Jílovská 262, Týnec nad Sázavou
Cyklo Švec, Na Potoce 225, Vlašim
Jaroslav Víšek – Sport Centrum, Červené Vršky 1594, Benešov
Jízdní kola Kučera, Lidická 1781 Vlašim
Maxsport, Tyršova 2076, Benešov
Prodej a opravy horských kol, Čerčanská 112, Poříčí nad Sázavou
SPORT ŠEFCÍK LYŽE – KOLA, Ke Stadiónu 2095, Benešov
Tomáš Trojánek, Pavlíkova 1528, Benešov
VELO FOX, Dr. E. Beneše 159, Bystřice
VELO SPORT Krupička, Na Bezděkově 2005, Benešov

tel.: +420 728 474 008
tel.: +420 317 701 823
tel.: +420 317 844 116
tel.: +420 317 722 152
tel.: +420 602 831 037
tel.: +420 777 151 597
tel.: +420 317 779 934
tel.: +420 317 726 777
tel.: +420 776 098 062
tel.: +420 317 793 416
tel.: +420 317 723 627

TRANSPORTATION



Information on coach Schedule



Information on train Schedule

www.jizdnirady.idnes.cz

tel.: +420 317 721 395, +420 900 144 444

tel.: +420 317 757 428, +420 840 112 113



Information Centre Benešov
Malé nám. 1700, 256 01 Benešov
e-mail: ic-benesov@posazavi.com
info@knihovna-benesov.cz
tel.: +420 317 726 004

Information Centre Čerčany
Sokolská 28, 257 22 Čerčany
e-mail: info@cercany.cz
tel.: +420 317 776 154

Information Centre Český Šternberk
257 26 Český Šternberk 27
e-mail: ic-sternberk@posazavi.com
tel.: +420 724 592 215
Opening hours: July – August

Information Centre Kutná Hora
Palackého nám. 377, 284 01 Kutná Hora
e-mail: infocentrum@kh.cz
tel.: +420 327 512 378

Information Centre Louňovice pod Blaníkem
Zámek 1, 257 06 Louňovice pod Blaníkem
e-mail: infopodbla@atlas.cz
tel.: +420 317 862 022

Information Centre Mnichovice
Masarykovo nám. 83, 251 64 Mnichovice
e-mail: infocentrum@mnichovice.info
tel.: +420 323 666 311

INFORMATION CENTRES

Information Centre Neveklovsko
nám. Jana Heřmana 83, 257 56 Neveklov
e-mail: info.neveklov@seznam.cz
tel.: +420 317 741 207

Information Centre Podblanicko Vlašim
Zámek 4, 258 01 Vlašim
e-mail: info@vlasimskypark.cz
tel.: +420 317 847 207
+420 734 362 091

Information Centre Rataje nad Sázavou
Zámecká 1, 285 07 Rataje nad Sázavou
e-mail: posta@obecrataje.cz
tel.: +420 327 322 169
Opening hours: May – September

Information Centre Říčany
Masarykovo nám. 83, 251 01 Říčany
e-mail: jitka.bahenska@ricany.cz
tel.: +420 323 618 142

Information Centre Sázava
nám. Voskovce a Wericha 280, 285 06 Sázava
e-mail: infocentrum@mestosazava.cz
tel.: +420 327 320 763

Information Centre Sedlčany
nám. T. G. Masaryka 32, 264 80 Sedlčany
e-mail: mu@sedlcany.cz
tel.: +420 318 821 158

Information Centre Týnec nad Sázavou
Klusáčkova 2, 257 41 Týnec nad Sázavou
e-mail: ic@centrumtync.cz
ic-tynec@posazavi.com
tel.: +420 317 729 050, +420 775 290 032

Information Centre Uhlířské Janovice
Pečírková 168, 285 04 Uhlířské Janovice
e-mail: kic@uhljan.cz
tel.: +420 327 542 197

Information Centre Votice
Komenského nám. 177, 259 01 Votice
e-mail: infocentrum@votice.cz
tel.: +420 317 812 505

Information Centre Zruč nad Sázavou
Zámek 1, 285 22 Zruč nad Sázavou
e-mail: infocentrum@mesto-zruc.cz
tel.: +420 327 531 194

Museum Divišov
Šternberská 158, 257 26 Divišov
e-mail: muzeum.divisov@chopos.cz
tel.: +420 317 855 224





www.posazavi.com

Web presentation of the Traditional Tourist Region POSÁZAVÍ

If you are interested in learning more about the Posázaví region, we invite you to visit the website offering all information you need. You will learn about historical and natural places of interest, you will find there the list of services, complete map materials to show you round the cycling and biking track and enabling you to meet the Sázava river on boats. The film shots introduce various present events as well as the historical in the region.

You can plan your holidays or a long weekend, you can find contacts, opening hours and complete price lists. Just sit to your computer and you can go through the Posázaví region before you come to visit us



Publication guaranteed by:

Cover photo:

Text and photographs:

Translations by:

Design and production by:

Edited by:

Published by:

Posázaví o.p.s., zámek Jemniště 1, 257 01 Postupice
Jaroslav Pelíšek

Archive Posázaví o.p.s., information centres of Sázava
region and individual project participants
Mánes, překlady a tlumočení, Národní třída 11
110 00 Praha 1 - Staré Město

Miroslav Horák – Region Design
Kupeckého 606, 293 01 Mladá Boleslav
tel.: +420 603 478 910, e-mail: horak@horacio.cz

Posázaví o.p.s., Masarykovo náměstí 1
256 01 Benešov, tel./fax: +420 317 701 948
e-mail: info@posazavi.com, <http://www.posazavi.com>

Posázaví o.p.s. in 2010, 15.000 copies
PUBLICATION NOT DESIGNED FOR SALE



ROP
CENTRAL
BOHEMIA



Central Bohemia Region

INVESTMENT INTO YOUR FUTURE
CO-FINANCED BY THE EUROPEAN UNION
FROM THE EUROPEAN FUND
FOR REGIONAL DEVELOPMENT